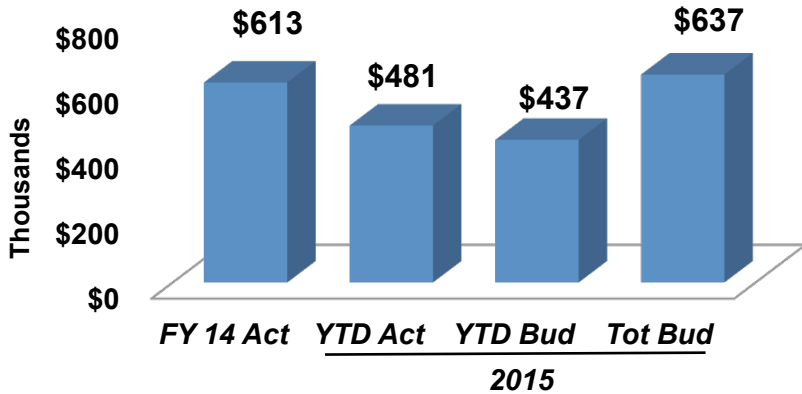


TUCW Dashboard

Feb 2015

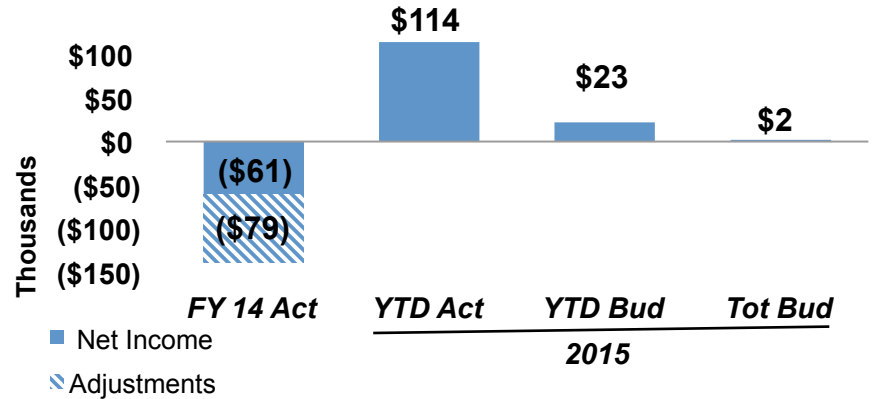
Pledge Payments

As of 2/28/15



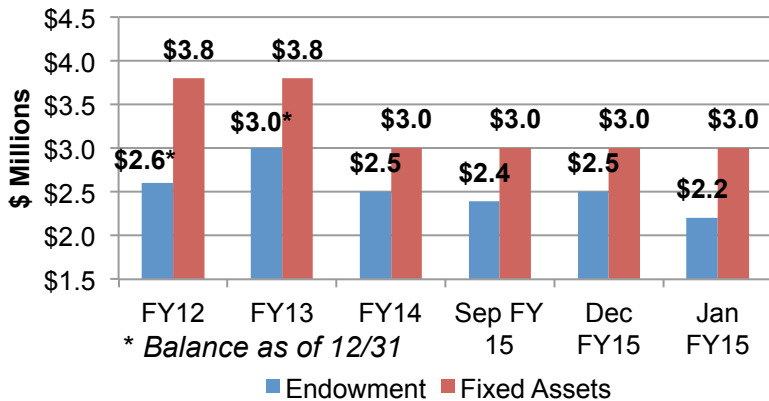
Net Income

As of 2/28/15



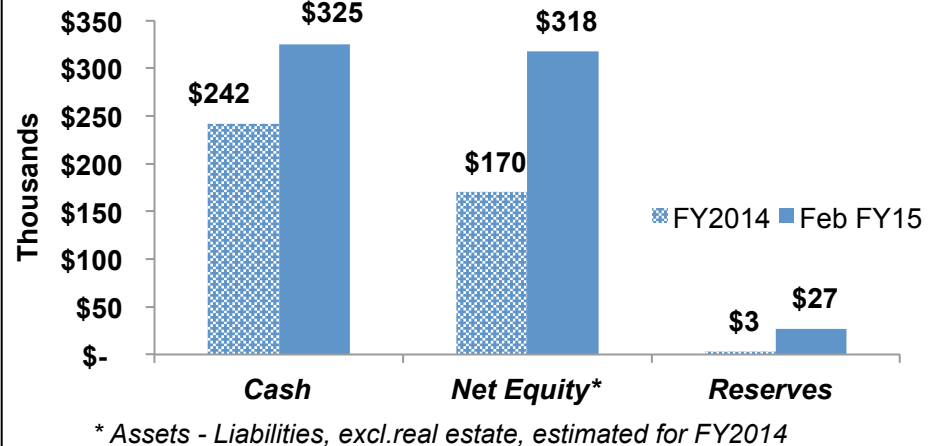
Asset Balance Sheet

1/31/15



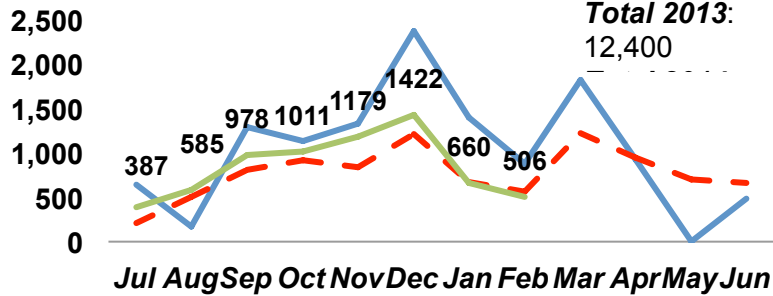
Operating Balance Sheet

2/28/15



TUCW Attendance/Membership Feb 2015

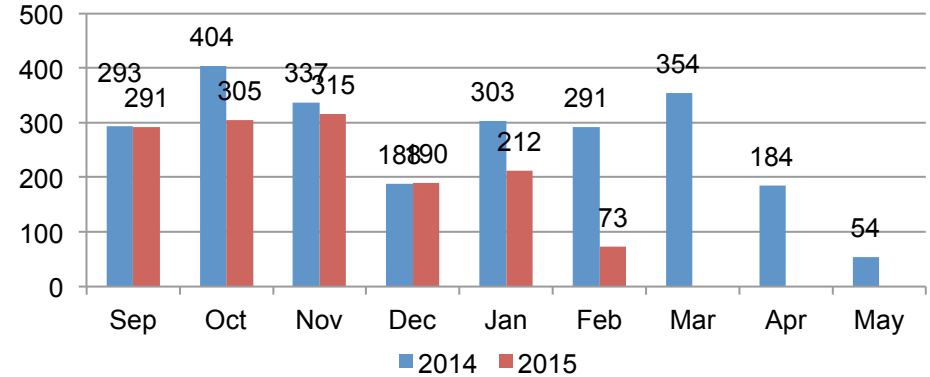
Adult Attendance



* Multiple weeks of missing data. Chart is only for macro trend analysis.

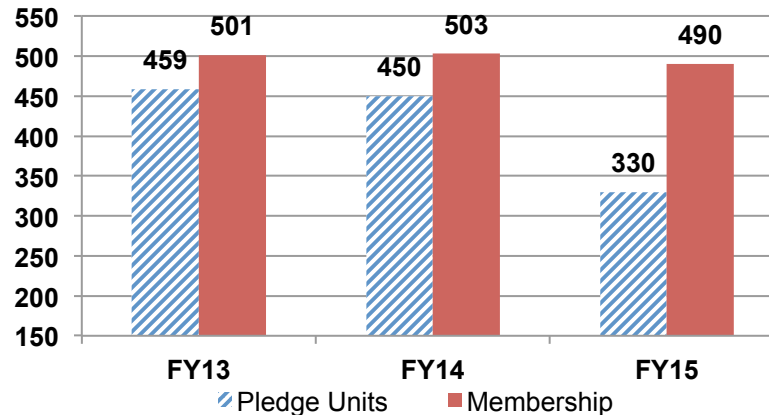
— 2013 — 2014 — 2015

RE Attendance



Pledge and Membership Units

2/28/15



Financial Summary

Feb 2014

Revenue

- Pledge collections lower than expected for month, but still ahead of YTD budget. Approx. \$160K left to collect in next 4 months.
- Plate collections lower than average; reduced attendance due to poor weather on 2/15 and cancellation of 2/22 service.
- Received \$30K donation toward the Lift.

Expenses

- \$6,555 in snow removal (+\$3,700 snow removal in Jan) – exceeds annual budget by \$2800. Additional expenses coming in March.
- \$4,400 in tree pruning (Nov – Jan) – annual budget for landscaping/grounds exceed by \$4,500 due to necessary maintenance activity.
- No senior minister compensation expense for ½ month due to unpaid leave.

Cash

- Cash balance remains strong \$325K.

What's Happening in TUCW Finance

Finance

- **2015-2016 Budget:** Finalizing alternative income sources, as well as maintenance project and HR related expenses.
- **Benefits Review:** Completed healthcare and pension analysis; presented to HR Committee with suggested recommendations regarding alternative insurance for eligible staff. HR Committee to initiate conversation with eligible staff in coming weeks.
- **Audit:** Internal audit initiated during February. Finalized selection of external auditor 3/12/15. External audit advisory services to begin by end of March. Formal audit to occur in September 2015.
- **Financial Policies:** Developing more comprehensive financial policy and procedure manual for the Policy Committee. Draft has been completed and is currently in review. Will seek input/guidance from external auditor on financial controls.
- **Endowment:** Has elected a new chair: Brian Lasher. In discussions with Endowment regarding: 1) distribution policy, 2) incorporation into TUCW's financials and reporting policies/procedures, 3) distributions for 2015-2016 fiscal year.
- **Courtyard Landscaping Project:** Continuing discussions with Marion Wertheim regarding landscaping proposals for front courtyard.
- **YRSC:** Supporting the structuring and launch of the Development and Fundraising Subcommittees.

Business Office

- **Technology:** Implementing replacement of existing PC-based systems with integrated cloud-based software solution ("Realm" by ACS).